



# Concept Plan for Phase 1A, 1C and 1D Middle Creek & Coal Run South of Route 571/Donaldson Road

Schuylkill County, PA  
June 13, 2023

Funded by National Fish and Wildlife Foundation Chesapeake Bay  
Small Watershed Planning and Technical Assistance Grant

## Benefits Summary

Restoration within areas 1A, 1C and 1D will:

- Reduce erosion of streambed and banks
- Increase retention of sediment, nutrients and carbon
- Increase flood flow storage and infiltration
- Treat acid mine drainage
- Improve aquatic and terrestrial riparian habitat

## Restoration Statistics

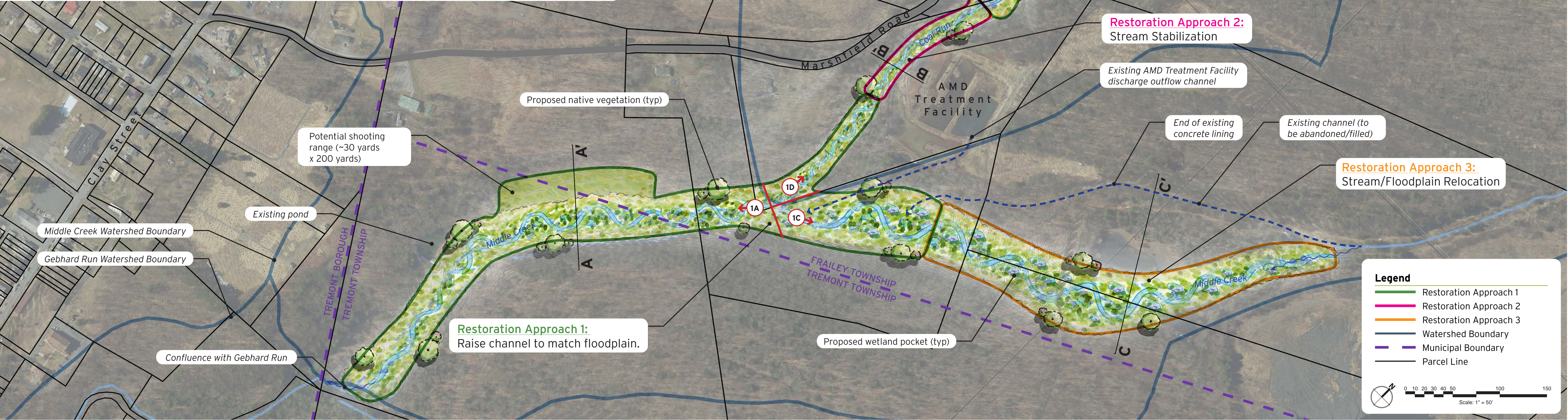
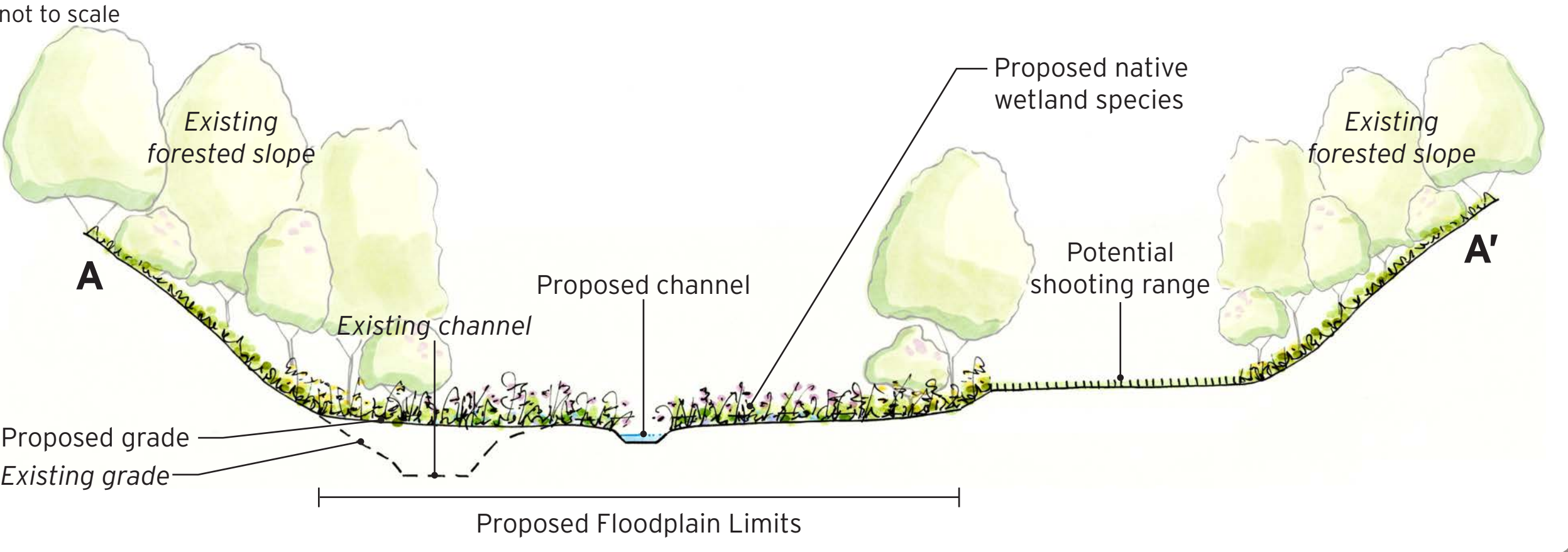
**Drainage Areas:**

- 1A - Middle Creek to Confluence with Gebhard Run: 3.08 square miles
- 1C - Middle Creek to Confluence with Coal Run: 1.83 square miles
- 1D - Coal Run to Confluence with Middle Creek: 1 square mile

**Linear Feet of Restoration:** ~6,973 feet

**Wetland Creation in the Floodplain:** ~23 acres

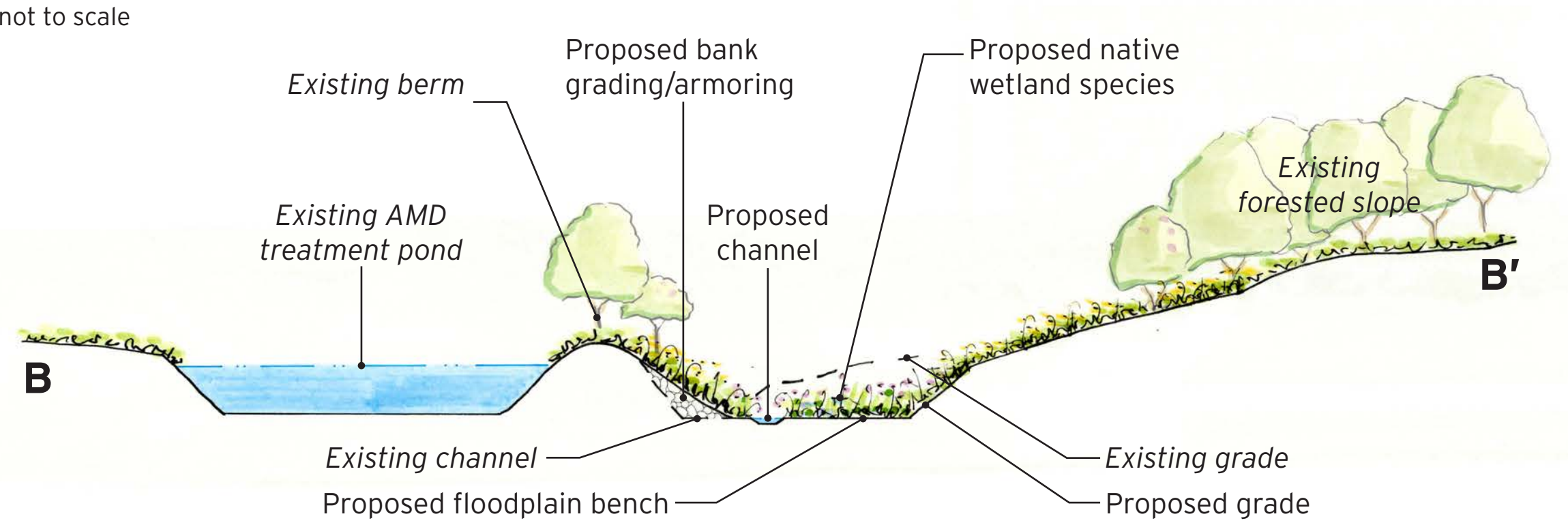
### Section A-A' - Restoration Approach 1: Raise Channel to Match Floodplain



### Proposed Conditions



### Section B-B' - Restoration Approach 2: Stream Stabilization



### Section C-C' - Restoration Approach 3: Stream/Floodplain Relocation

