

Seedling

Summer 2019

**STOP BY THE SHADLE NATURE
CENTER DURING THE COUNTY FAIR**

**SCHUYLKILL ON
THE MOVE HIKE
SCHEDULE**

**Street Tree
Benefits**

**WHAT'S THIS
ABOUT DANDELIONS?**

POUR TOUR INFO



PEOPLE • CONSERVATION • RESOURCES



Nothing says summer more than sunflowers and the sun! This is just one of many diverse crops that are raised in the soils of Schuylkill County. Be sure to buy local and shop small at your local farmer's market. There's nothing like the "bounty from Schuylkill County!" Sweet corn.....anyone?



Jenna St. Clair, District Manager

The Schuylkill Conservation District held a series of meetings this spring to develop a new strategic plan for 2020-2025. The District has experienced rapid growth in programming and staff in response to emerging resource needs and funding opportunities. This growth has been largely reactive, however, and reached a point where operational infrastructure needed to be assessed in order to support existing and continued service to Schuylkill County. This strategic planning process was a long overdue opportunity to examine the identity and priorities of the District and use that to guide our progress.

The mission and vision statements of the District were reexamined and revised. Eight goal areas were established along with objectives and action steps for each of these goal areas.

MISSION

The Schuylkill Conservation District protects and restores the county’s natural resources through education, cooperation, guidance, and technical assistance that promotes wise stewardship, responsible development, and sustainability.

VISION

The Schuylkill Conservation District strives to become an accessible local leader in natural resource conservation to create an improved environment and better quality of life throughout Schuylkill County.

GOALS

- Education, Outreach, & Public Relations
- Soil Erosion & Sediment Control
- Watershed Restoration & Protection
- Invasive Species Management
- Parks, Trails & Recreation
- Sustainable Agriculture
- Flood Mitigation & Recovery
- District Operations

Over the next year we will be rolling out the full strategic plan and delving deeper into these goal areas and the associated tasks. I hope you will be as excited as we are to tackle this important work!

I welcome your thoughts, ideas, concerns, and questions about the Schuylkill Conservation District and can be reached at (570) 622-3742 x 3335 and jstclair@co.schuylkill.pa.us.



Jenna with daughter Cora at the annual Bear Creek Festival

Jenna



“Fairs Feature Agriculture” is theme for 2019 Schuylkill County Fair

Brochures showcasing events and attractions for the county fair are now available on-line at www.schuylkillfair.com



Held from July 29 to August 3, the fair still has an admission of \$5.00 per person with children ages 10 and under FREE. Be sure to stop by the Dr. James S. Shadle Nature Center and the nearby Weston Pavilion for nightly entertainment available at no extra charge. Each night features a new program!





Schuylkill Chamber of Commerce Agribusiness Committee Presents:

Pour Tour

- From Farm to Glass-

Saturday, August 17, 2019

9:30 a.m. | Depart from Union Station

4:00 p.m. Return

Tickets: \$35 | Lunch Included

Must be 21 or older to attend - valid ID required

Pour Tour guide: Porcupine Pat,
Schuylkill Conservation District

Tour Stops:

D.G. Yuengling & Sons, Inc. - Private Tour & Tasting
Pioneer Evergreen Farms - Lunch & Leisure
Jersey Acres Farms/Stone Mountain Winery - Wine
Tasting & Tour

Goodie bags provided by: Mauch Chunk Trust Company

* All attendees must wear completely closed shoes! *

Register at www.schuylkillchamber.com or (570)-622-1942
Please specify any food allergies at the time of registration.



Penn State Extension: Managing Invasive Plant Species Workshop July 24 In Allentown

Penn State Extension will host a Managing Invasive Plant Species Workshop on July 24 at Upper Macungie Station 56, 6510 Schantz Road in Allentown from 8:30 a.m. to 3:00 p.m. This workshop will provide participants with the knowledge and skills to properly identify invasive plants and develop strategies for treatment and control.



Multiflora Rose

Invasive weeds and pests are a major threat to our natural and cultivated landscapes, spreading quickly and displacing or killing native plants. Invasive species (plants, insects, and animals) are costing the United States more than \$138 billion each year, due to their economic impact on agriculture, forestry, fisheries, waterways, wildlife, and ornamental landscapes. Ecologists now rank invasion by exotic plants, animals and pathogens second only to habitat loss as a major threat to local biodiversity. For more information please visit: <https://extension.psu.edu/managing-invasive-plants> There is a \$75 fee for this workshop.

Spotted Lanternfly Quarantine Expanded

The Spotted Lanternfly (SLF) quarantine zone has been expanded to Dauphin County. The quarantine zone, last expanded in November 2017, now includes Berks, Bucks, Carbon, Chester, Dauphin, Delaware, Lancaster, Lebanon, Lehigh, Monroe, Montgomery, Northampton, Philadelphia, and Schuylkill counties.

On March 15, the Pennsylvania Department of Agriculture expanded the quarantine to Dauphin County after receiving reports of a population of SLF in the county and actively surveying and treating the area. The department has joined forces with Penn State University and Extension, and the U.S. Department of Agriculture (USDA) to control and contain the spread of SLF.

Penn State University is leading the research efforts currently underway to answer many questions about the insect's biology, and the ability of the insect to adapt to the environment in Pennsylvania. USDA and the department are actively treating locations where SLF has been reported.



The department is also surveying all counties in the state outside of the quarantine looking for SLF. The quarantine gives the department the authority to regulate the movement of commodities that may be moving within or leaving the quarantine zone. It restricts the movement of articles that contain any life stages of SLF, including egg masses, nymphs, and adults. Businesses operating in the quarantine zone must have permits to move equipment and goods within and out of the zone. To determine if your business or organization is required to carry permits, visit Penn State Extension at <https://extension.psu.edu/spotted-lanternfly-permit-training>.



The department is also encouraging all communities and homeowners to help contain the spread of this invasive pest. For more information, visit the department's website at https://www.agriculture.pa.gov/Plants_Land_Water/PlantIndustry/Entomology/spotted_lanternfly/Pages/default.aspx, and Penn State Extension's website at <https://extension.psu.edu/spotted-lanternfly-management-for-homeowners>.

**Scenes from the 2019 Bear Creek Festival
held on Sunday, June 2 at the Schuylkill
County Fairgrounds**



PennDOT Launches New Pollinator Habitat Plan; Adopt And Beautify For Pollinators Program For Citizens Who Want To Help

PennDOT has expanded its popular *Adopt A Highway Program* to now include an *Adopt And Beautify For Pollinators Program* to provide volunteers with the opportunity to support pollinator conservation by adopting, planting and maintaining Pollinator Habitat sites.

Sites available for pollinator conservation are state highway right-of-ways, including interchange areas, traffic islands or two-mile sections of roadway. PennDOT has a *Roadside Planting Guide-book* available to assist volunteers and groups participating in this program.

PennDOT has contacts within each of its District Offices that can answer questions about the Adopt and Beautify Program for pollinator conservation. Locally, contact PennDOT in Schuylkill Haven at 570-385-7812 or 1-800-932-4600. The PennDOT pollinator conservation program was developed as a result of PennDOT's new *Pollinator Habitat Plan* initiative, which in turn supports *Pennsylvania's Pollinator Protection Plan*.

Why is PennDOT involved in Pennsylvania's effort to protect pollinators?

Historically, agriculture has been, and continues to be important to the Pennsylvania economy. The diversity of crops, and the number of pollinator dependent crops grown in Pennsylvania is greater than almost all other states. Nearly 75 percent of our flowering plants and crops are pollinator dependent. Pollinators are particularly important for fruit and vegetable production.

Habitat loss, fragmentation and degradation in combination with increases in pesticide use and introduced disease threaten the pollinators on which we depend for food crops and a sustainable agricultural economy. In fact the declining numbers of several species have been so significant that these species are under review for listing as federal threatened and endangered species, including the migratory Monarch Butterfly.

PennDOT's *Pollinator Habitat Plan* will, in partnership with other federal and state agencies, private and community organizations, create naturalized gardens and meadows planted with pollinator-friendly plant species at designated sites. Sites within rest areas and welcome centers will provide additional public education benefit.

To learn more, visit PennDOT's *Pollinator Habitat Plan* webpage. Questions about this statewide program should be directed to Antonia Zawisa, PennDOT Environmental Analysis Unit, by calling 814-765-0588 or sending email to: azawisa@pa.gov.



NRCS-PA Now Accepting Applications For Conservation Innovation Grants

The USDA's Natural Resources Conservation Service-PA announces up to \$250,000 of funding available in Pennsylvania for Conservation Innovation Grants (CIG). The deadline for applications is July 7.

"Conservation Innovation Grants are critical for developing science, technology and innovative tools to address natural resource concerns on Pennsylvania's private working lands," said State Conservationist Denise Coleman. "These grants help bridge the gap between initial product development and taking that product or approach to market. The overall goal is to incorporate new innovations into NRCS technical manuals and make them available to the agricultural community."

In conjunction with agricultural production, these grants are stimulate the development and adoption of innovative conservation approaches and technologies while leveraging federal investment in environmental enhancement and protection.

Eligible applicants include eligible individuals, local and state governments, and non-governmental organizations. Projects must be within Pennsylvania and may be area-based or statewide in scope.

Applicants submitting proposals may request up to \$75,000 of matching federal funds. Applicants must provide at least a 50 percent non-federal match that can be cash, in-kind or a combination of both.

The proposal must involve Environmental Quality Incentives Program (EQIP) eligible producers and should demonstrate the use of innovative technologies or approaches to address a natural resource concern in one of the following categories: non-industrial private forestland, urban farming, or soil health. These grants do not fund research projects. The program is designed to aid the adoption of measures that have been sufficiently studied to indicate a high likelihood of success.



Conservation Innovation Grants at the state level build on our national program and enable NRCS to better address natural resource concerns at the local level. This has allowed for great innovation in Pennsylvania, where NRCS has invested over \$1.8 million in CIG projects. To learn more about how to apply, visit the NRCS-PA Conservation Innovations Grants webpage at <https://www.nrcs.usda.gov/wps/portal/nrcs/main/pa/programs/financial/cig/>



**Summer 2019
Page 6**

Orwigsburg

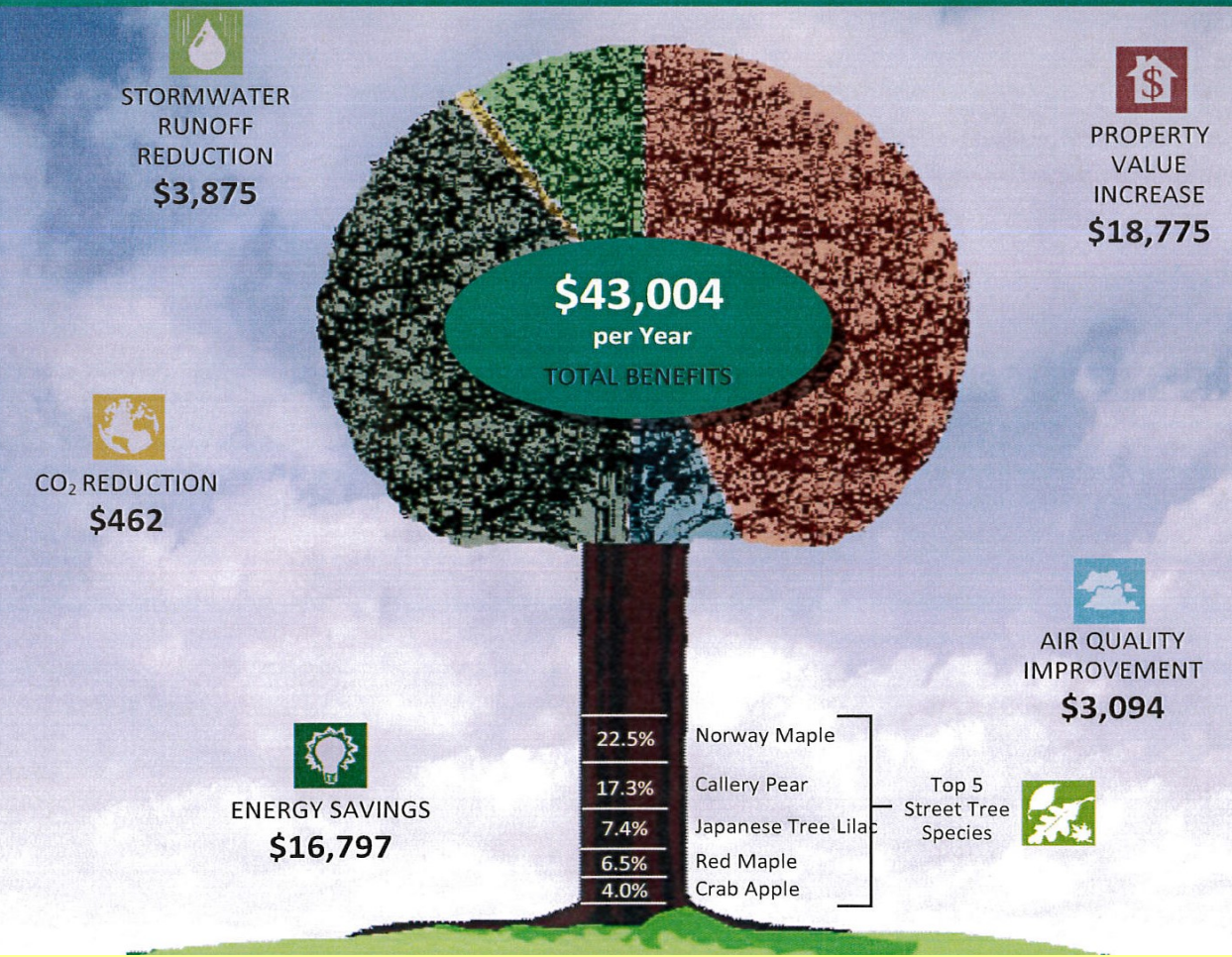
Street Tree Benefits

Orwigsburg street trees provide thousands of dollars of environmental, economic and aesthetic benefits to the community. Over their lifetime, street tree benefits exceed the costs of planting and care, representing a 300 percent return on investment. Tree benefits increase over time highlighting the importance of not only planting trees, but of providing ongoing maintenance and protection. These benefits are a reminder of the worthwhile investment in our community forestry program.

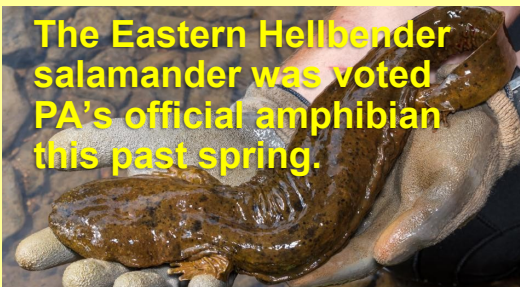
Trees:

- Reduce stormwater runoff
- Lower summer air temperatures
- Reduce air pollution
- Reduce heating and cooling costs
- Reduce atmospheric carbon dioxide (CO₂)
- Enhance property values
- Provide wildlife habitat
- Improve health and wellbeing
- Improve learning and concentration
- Provide aesthetic benefits

Annually Orwigsburg public street trees provide¹...



Orwigsburg has a group of volunteers who care for their community trees. This is a handout that the group recently distributed.



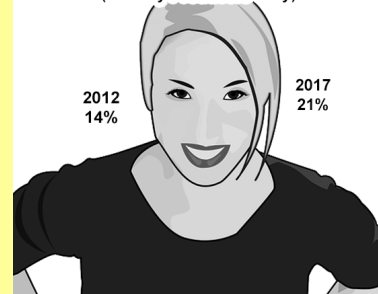
The Eastern Hellbender salamander was voted PA's official amphibian this past spring.

Click here for more info:

<https://pfbc.pa.gov/nativeAmpRep.htm>

2012	2017
600 Organic Farms	1,048 Organic Farms
\$78.5 Million in Sales	\$707.6 Million in Sales

Pennsylvania Female Farmers, 2012 and 2017 (Primary Producers Only)



This and more information can be found through the newsletter from the Center for Rural Pennsylvania. Click here for info:

https://www.rural.palegislature.us/publications_newsletter.html



how to remove a tick

1. Use fine-tipped tweezers to grasp the tick as close to the skin's surface as possible.
2. Pull upward with steady, even pressure to remove the tick. Avoid twisting or jerking.
3. Clean the bite area and your hands with rubbing alcohol, iodine scrub, or soap and water.

Notes:

- Remove the tick as soon as possible.
- If tick mouthparts remain in the skin, leave them alone. In most cases, they will fall out in a few days.
- Don't use nail polish, petroleum jelly, or a hot match to make the tick detach.
- If you develop a rash or fever within several weeks of removing a tick, see your doctor. Be sure to tell the doctor about your recent tick bite, when the bite occurred, and where you most likely acquired the tick.

Dandelion Facts:

Dandelions are NOT weeds, but are from the same family as sunflowers.

1 cup of dandelion greens = 535% of your daily recommended vitamin K and 112% of vitamin A.

A Dandelion Seed can travel up to 5 miles before it lands.

Every part of the dandelion is edible.

Up until the 1800's, dandelions were seen as extremely beneficial. People would remove grass to plant dandelions.



"Landscapes of great wonder and beauty lie under our feet and all around us. They are discovered in tunnels in the ground, the heart of flowers, the hollows of trees, fresh-water ponds, seaweed jungles between tides, and even drops of water. Life in these hidden worlds is more startling in reality than anything we can imagine. How could this earth of ours, which is only a speck in the heavens, have so much variety of life, so many curious and exciting creatures?"

— Walt Disney





2019 WALK SCHEDULE

Schuylkill On the Move is a project of Schuylkill County's VISION and promotes positive steps toward good health through walking and an appreciation of the natural beauty and fascinating history of our area. For more information on each walk: porcupinepat@yahoo.com

* **Saturday, July 6 from 9:00 a.m. to 1:00 p.m.:** "Hamburg Hike" Join Schuylkill River Trail Ambassador Mandy Fitzpatrick for the "Hamburg Hike" to learn about the Schuylkill River Trail, its website, interactive map, programs and more while enjoying the tree covered trail. Meets at the State Street trailhead located at 25 State Street in Hamburg. (6 miles—moderate)

* **Saturday, July 13 from 10:00 a.m. to 2:00 p.m.:** "Frackville Grade Grinder" Hike the old Reading Railroad and learn about rail history from railfan "Hiker Jim E." Meets at the northeast corner of Wal Mart parking lot at 500 Terry Rich Blvd. in Saint Clair. (6.8 miles—moderate)

* **Sunday, July 14 from 8:00 a.m. to 2:00 p.m.:** "Bear Valley Adventure" with "Sojourner Steve" who leads you on the Bear Valley Loop to see Adams Rock, Bear Valley Swamp and various old mines. Meets west of Good Springs intersection of Gap Street and Bear Valley Road. (11 miles—moderate)

* **Saturday, July 20 from 9:30 a.m. to 12:30 p.m.:** "Sweet Arrow Splash" Join Mike Centeleghe for this educational session at the Waterfall Pavilion area to catch and observe some aquatic critters. Open to all ages. Meet at the Waterfall Road parking lot. (2 miles—easy)

* **Saturday, July 20 from 10:30 a.m. to 3:00 p.m.:** "Trout Run" Robin Tracey leads you on this hike near the creek that includes a visit to the Bordner Cabin. Dogs must be leashed and bring a lunch. Meets at the Trout Run Trailhead located just off Rt. 443 in Swatara State Park. (8 miles—moderate)

* **Sunday, July 21 from 9:00 a.m. to 2:00 p.m.:** "Dyer Run Gorge" "Hiker Jim" Murphy leads this trail walk through a wilderness area. You follow a stream to a reservoir and return by the same trail. A beautiful place and a shady hike! Meets at Clover Fire Company in Heckschersville. (five miles—moderate)

* **Saturday, July 27 from 8:30 a.m. to 3:00 p.m.:** "D & L Trail Hike" "Hiker Jim E." takes you "up the line" to hike the D & L in Carbondale. Meets at Rt. 54 and Morea Road to carpool to Jessup. (7 miles—easy)

* **Sunday, August 4 from 9:00 a.m. to 2:00 p.m.:** "Crystal Run Adventure" See Crystal Falls and reservoir plus Dick's stripping and the county view with "Hiker Jim." Meets at Mount Pleasant Hose Company in Buck Run. (8 miles—moderate)

* **Saturday, August 10 from 10:00 a.m. to 12 noon:** "Ashland Walk About" Ashland's natural personality is on stage as "Hiker Jim E." walks you around town. Meets at Boyers Supermarket on East Centre Street. (4 miles—moderate)

* **Tuesday, August 13 from 5:00 to 7:00 p.m.:** "Tuesday Trail Trek" Enjoy a stroll on the trail while seeing the river flowing nearby. Learn about the Schuylkill River Trail Ambassador program with Mandy Fitzpatrick. Meets at the Tunnel Road Trailhead just outside of Landingville. 141 Tunnel Road. (2-1/2 miles—easy)

* **Saturday, August 17 from 10:30 a.m. to 2:30 p.m.:** "Roaring Creek Tract" Robin Tracey takes you on a beautiful hike past two reservoirs. Meet at the Roaring Creek parking lot off Route 42 north of Aristes. Bring a lunch and dogs are welcome. (8 miles—moderate)

* **Saturday, August 17 from 1:00 to 4:00 p.m.:** "Edible Plants Hike" at Swatara State Park. Meet volunteer naturalist Mike Centeleghe at the State Park Lane parking lot to learn more about local plant life. (3 miles—easy)

* **Sunday, August 18 from 9:00 a.m. to 1:00 p.m.:** "Gold Mine Mountain Special" "Sojourner Steve" promises abandoned mines, old railroads, an old stage coach road and an old reservoir. Meet at the Game Commission parking lot across from Boxcar Rocks on Gold Mine Road. (5 miles—easy)

* **Saturday, August 24 from 8:00 to 10:00 a.m.:** "Shenandoah - Lehigh Valley Ramble" Trek the old Lehigh Valley Railroad in Shenandoah. The hike can be done in one direction with a carpool. Meets at East Centre and Bower Street. (2 miles—easy)

* **Sunday, September 8 from 9:00 a.m. to 1:00 p.m.:** "Dyer Run Plus" Visit Dyer Run Gorge with "Hiker Jim" who leads you to the reservoir, Broad Mountain fire lane trail and then to Stephens Road. Meets at Clover Fire Company in Heckshersville. (7-1/2 miles—moderate)

* **Saturday, September 14 from 9:30 a.m. to 4:00 p.m.:** "The Pinnacle" Gorgeous views from the top of Blue Mountain. Meet Robin Tracey in the State Game Lands parking lot off Rte. 61 south near Port Clinton to carpool. **You must register for this walk by calling Robin at 570-467-2506.** Bring a lunch. **No dogs please.** (11 miles—difficult)

* **Sunday, September 22 from 9:00 a.m. to 1:00 p.m.:** "Big Lick Mountain" An encore visit with "Sojourner Steve" as he leads you to the Big Lick Mountain trails and railroads. See three tunnels including the Williamstown, Big Lick Slope and Big Lick Water level. Meets at the Dollar General on Rt. 209 in Williamstown. (Note: dogs are welcome but must get along with people and other dogs.) (7 miles—moderate)



**Summer 2019
Page 9**

* **Wednesday, September 25 from 4:30 to 6:30 p.m.: “Wednesday Wander”** Join Mandy Fitzpatrick to learn more about the expansion of the Schuylkill River Trail. Meets at the state game lands parking lot by the Mall Road sign of Rt. 61 north. (1.5 miles—easy)

* **Saturday, October 5 from 9:30 a.m. to 2:30 p.m.: “Riverlands Ramble”** Located outside of Berwick, the Riverlands hosts amazing wetlands and beautiful scenery. Hike along the Susquehanna River and through a large wetland area. Meet Robin Tracey at the Tuscarora State Park Visitor Center for carpool to the site. You can also meet Robin at the Riverlands Education Building at 10:30 a.m. (6 miles—moderate)

* **Saturday, October 5 from 10:00 to 11:00 a.m. “Wee Ones Walk”** Join “Porcupine Pat” for this kids “knee high to a bread box” tour at Sweet Arrow Lake. We use our senses to explore and enjoy the early days of fall. Meets at Waterfall Road Parking Lot. (1 mile—easy)

* **Sunday, October 6 from 9:00 a.m. to 12 noon: “Kalmia Tunnel Hike”** This is a new walk with “Sojourner Steve” where you hike the Sharp Mountain railroad to the old Kalmia Tunnel/works. The end is on top of Gold Mine Mountain. Meets at Nelson’s Beer Distributor, Rt. 209 in Tower City — bottom of Keefers on the right. (5 miles—moderate)

* **Saturday, October 19 from 9:00 a.m. to 1:00 p.m.: “AT to SRT”** From the Appalachian Trail to the Schuylkill River Trail hike. Meet Mandy Fitzpatrick to learn more about the history of the Schuylkill River Trail and its role in communities. Meet at the Port Clinton ballfield at 944 South Street in Port Clinton. (8 miles—moderate)

* **Sunday, October 20 from 9:00 a.m. to 2:00 p.m.: “County View”** You will visit the old Airport Road and go to the “88” with “Hiker Jim” Murphy. Then, hike to High Point on Buck Ridge for views of Schuylkill County. Meet at the Mount Pleasant Hose Company in Buck Run. (8-1/2 miles—easy)

* **Saturday, November 2 from 10:00 to 11:00 a.m. “Wee Ones Walk”** Join “Porcupine Pat” for this kids “knee high to a bread box” tour at Sweet Arrow Lake. We use our senses to explore and enjoy the early days of fall. We take a different route than the October program. Meets at Waterfall Road Parking Lot. (1 mile—easy)

* **Sunday, November 3 from 9:00 a.m. to 3:00 p.m.: “Bear Valley Hike”** “Sojourner Steve” leads you on the Bear Valley Loop to see Adams Rock, Bear Valley Swamp, various old mines and the north entrance to Williamstown Tunnel. Meets at the entrance to Bear Valley Road and entrance to Rausch Creek ATV Park near Valley View at Gap Street. (10 miles—moderate)

* **Sunday, November 10 from 1:00 to 3:00 p.m. “Journey to Boxcar Rocks”** Mike Centeleghe will thrill us with a trip to these massive boulders. Meets in the state game lands parking lot off Gold Mine Road south of Tower City. (3 miles—moderate)

* **Sunday, November 17 from 9:00 a.m. to 1:00 p.m.: “Buck Ridge Hike”** “Hiker Jim” offers a bit of a rocky hill, West Creek, the “88,” old Airport Road and you’ll see Lake Buck Run. Meets at the Mount Pleasant Hose Company in Buck Run. (5 miles—easy)

* **Sunday, December 8 from 9:00 a.m. to 2:00 p.m.: “Broad Mountain Bench Trail”** Hike the Mine Hill and Schuylkill Haven Railroad bed to a reservoir with “Hiker Jim.” Check out a recent clear cut project. Meets at Clover Fire Company in Heckschersville. (10.5 miles—easy)

Many thanks to our sponsors. Visit our sponsors or like them on Facebook.



PEOPLE • CONSERVATION • RESOURCES

www.schuylkillcd.org



www.schuylkill.org



www.schuylkillhistory.org



www.schuylkillvision.com



**Summer 2019
Page10**

2020 Census: What's in it for me?

Once a decade, every resident in the U.S. is asked to take part in the U.S. Census. The decennial census, which is mandated by the U.S Constitution, counts our nation's population and households. Here are 15 ways that Census data are used and how that data affect you and your community.

1. Distribute more than \$675 billion in federal funds
2. Draw federal, state and local legislative districts
3. Support rural development
4. Attract new businesses to states and local communities
5. Forecast future transportation needs
6. Plan for hospitals, nursing homes, clinics, and other health services
7. Forecast future housing needs
8. Direct funds for services for people in poverty, people with disabilities, the elderly, and children
9. Design public safety strategies
10. Analyze local trends
11. Estimate the number of people displaced by natural disasters
12. Create maps to speed emergency services
13. Plan future government services
14. Facilitate scientific research
15. Spot trends in the economic well-being of our nation and states



Farmland Preservation Program preserves three farms in county

Pennsylvania leads the nation in the number of farms and acres permanently preserved for agricultural production. The program guarantees a future food supply and contributes to a healthier economy. The Schuylkill County Agricultural Land Preservation Program has preserved 106 farms, which comes to a grand total of 11,156.2 acres. The three farms are:

1. Glenn Hetherington – 45.08 acre crop farm, county donation – Union Township
2. Marvin and Catherine Teter – 82.75 acre crop farm, USDA NRCS partnership "Federal Agricultural Conservation Easement Program" or "ACEP" program, reimburses up to half of the easement purchase price and therefore frees up county funds for additional easement purchases. – West Brunswick Township
3. Gary and Richard Hart farm- 77.77 acre crop farm – Union Township





LandSCAPES



“A heritage worth saving is a legacy worth protecting”

Fort Indiantown Gap Offering Tours of Rare Butterflies

Fort Indiantown Gap will once again open its gates to allow guided tours to view regal fritillary butterflies. The tours, led by Wildlife and Training Center staff, afford butterfly lovers a chance to see the distinct habitat that is so important for this extremely rare species.

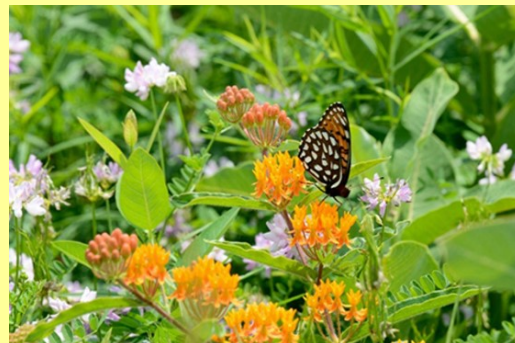
The tours will be held:

- Friday, July 5
- Saturday, July 6
- Friday, July 12
- Saturday, July 13



The land at Fort Indiantown Gap is regularly disturbed, but not cultivated, creating the habitat favored by the butterflies, which require specific locations and vegetation to thrive.

With the exception of the population at Fort Indiantown Gap, the regal fritillaries are considered extinct east of the Mississippi River. Wildlife biologists from ZooAmerica and Fort Indiantown Gap are working together through the Regal Fritillary Conservation Program to establish more colonies of the butterfly throughout Pennsylvania.

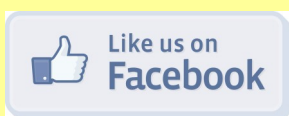


Reservations are not required, and the tour is free, although no rain dates will be made, so dress accordingly. For more information about the tours (including a map with parking locations), or the regal fritillary butterfly, visit www.ftig.pa.gov and click on "Butterfly Tours" under the "Trending" section. General inquiries about the tours can be directed to RA-DMVA-Wildlife@pa.gov or (717) 861-3299.

**Pennsylvania Natural
Heritage Program**



County Natural Heritage Inventories are designed to inform the residents of a county about their living heritage and give them a tool to use in planning the future of their communities. County and municipal planners; federal, state and local agencies; businesses; environmental consultants; developers; private citizens, local conservation organizations; and many other groups use these studies to help make land-use decisions. With increasing emphasis on planning within the Commonwealth, these studies are important for the conservation of Pennsylvania's natural resources. Visit this link for more info: <http://www.naturalheritage.state.pa.us/CNHI.aspx>



Red-eyed vireos are common summer birds. You'll hear them!

schuylkillcountyconservancy@gmail.com

[@SchuylkillCountyConservancy](https://www.facebook.com/SchuylkillCountyConservancy)



**Summer 2019
Page 12**



THIRD ANNUAL GARDEN GATHERING SATURDAY AUGUST 17 10 AM TO 2 PM

FEEDING BODY AND SOUL

Come visit us as we celebrate our third annual Garden Gathering at the grounds of First UCC Church, 110 Route 61, Schuylkill Haven, PA (adjacent to Penn State Schuylkill Campus). Master Gardeners will be in attendance to help with your gardening questions!

Admission and Parking are FREE



**PLANTS AND
PRODUCE GROWN BY
MASTER GARDENERS,
CUT FLOWER
ARRANGEMENTS,
BAKED GOODS,
FOOD AND
REFRESHMENTS
AVAILABLE FOR
PURCHASE**

Vendors will include:

It's Just Barbeque

Hope Hill

Honey for Heroes

**Plus other artisans
and music**

**Ask the Master
Gardener**



PennState

**Penn State
Master Gardeners**

**Questions?
Call us at**

**570-622-4225
Monday to Friday
8:30 to 4:30**



**Summer 2019
Page 13**



**Master
Gardeners**
PennState Extension

NEWS LEAF



Master Gardeners of Schuylkill County

schuylkillmg@psu.edu

570.622.4225 ext. 23

New Master Gardener Manual now available

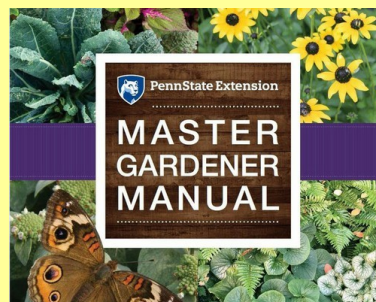
Penn State Extension has published the newly updated Master Gardener Manual, an expansive guide containing a comprehensive inventory of gardening and landscape-management topics for home gardeners, students and professionals.

The manual incorporates the research-based knowledge and experience of Penn State College of Agricultural Sciences professors and extension professionals from several fields, including horticulture, small and tree fruit production, landscape architecture, turfgrass science, forestry and wildlife management, entomology, plant pathology, and botany.

Although it is available to the public, one of the primary purposes of the guide is to instruct Penn State Master Gardeners, who are volunteers trained by Penn State Extension to answer questions, speak to groups, work with 4-H gardening projects, maintain demonstration gardens, teach plant sciences and horticulture, write gardening articles, and more.

The publication provides information to familiarize these volunteers with the land-grant mission of Penn State Extension, and the first section of the manual is focused on teaching and communication with adults, children and teens. Certified Master Gardeners in turn educate individuals and groups on topics such as vegetable gardening, plant selection and care, composting and soil health, controlling pests safely, pollinator gardening, and pruning.

The Master Gardener Manual is an 8.5-by-10-inch, hardcover, case-bound volume with more than 600 color images. The publication is available from Penn State Extension for \$75.00 plus shipping. Orders can be placed by calling toll free 877-345-0691. The publication number is AGRS-139. Most major credit cards are accepted.



Seek out inspiration this summer



Visit botanical gardens and public parks, or participate in local garden tours for new design ideas and inspiration. Take photos—with permission—of particular areas that you like or of plant combinations to try in your own yard. Document favorite hardscape materials such as pavers, gravel, trellises or furniture, and ask the homeowner if they know of a source. Gardeners are always willing to share their stories from rough patches to smooth sailing with their plants.



**MARK YOUR CALENDARS FOR
OUR ANNUAL GARDEN EVENT
THIS AUGUST. SEE THE PREVIOUS
PAGE IN THIS NEWSLETTER.**

**Catch Master
Gardeners on WPPA
AM 1360 at 10 a.m.
on the first Tuesday
of each month year
round.**



**Summer 2019
Page 14**

**PROGRAM LINEUP FOR THE
WESTON PAVILION AND
SHADLE NATURE CENTER
DURING THE COUNTY FAIR
JULY 29 TO AUGUST 3, 2019**



- **Monday, July 29 at 6:30 p.m.:** “Ways of Wildlife” with “Porcupine Pat.” Local wildlife show and tell.
- **Tuesday, July 30 at 1:00 p.m.:** “Mother Nature’s Miracles” with “Bugman.” Learn insect lore and get a chance to hold live insects. Also, a repeat of “Ways of Wildlife” will be held at 6:30 p.m.
- **Wednesday, July 31 at 6:30 p.m.:** “Focus on Mosquitoes and West Nile Virus plus update on the Spotted Lanternfly” with Kyle Schutt, Insect Management Technician for the Schuylkill Conservation District.
- **Thursday, August 1 at 6:30 p.m.:** “Form Follows Function” with Master Gardener and South Schuylkill Garden Club member Larry Moyer. Features a connection between plants and insects.
- **Friday, August 2 at 6:30 p.m.:** “Bees as Pollinators” with “Queen Bee” Kathy Hampford. Learn about the importance of bees to us.
- **Saturday, August 3 at 6:30 p.m.:** “Live Animal Show” with Peggy Hentz and the crew from Red Creek Wildlife Center.

There is no extra charge for these programs!

Schuylkill Conservation District Board and Staff

BOARD OF DIRECTORS

- District Chair:
Glenn Luckenbill
- Vice Chair:
Scott Graver
- Directors:
- Commissioner Gary Hess
- Stanley Fidler
- Dottie Sterner
- F. Diane Wolfgang
- Eric Leiby
- Glenn Hetherington
- Dennis Daubert

ASSOCIATE DIRECTORS

- Chris Bentz
- Robert Carl, Jr.
- Frank Zukas
- Russell Wagner



STAFF PHONE EXTENSIONS FOR 570.622.3742

- Jenna St. Clair, District Manager, 3335
- Martie Hetherington, Chesapeake Bay Coordinator, 3328
- “Porcupine Pat” McKinney, Education Coordinator, 3326
- Missy Seigfried, Conservation Fiscal Technician, 3324
- Stephanie Lubinsky, Conservation Program Technician, 3329
- Robert Evanchalk, Assistant Parks and Recreation Supervisor, 3334
- Vacant, Conservation Program Technician, 3327
- Bill Reichert, Upper Swatara Flood Recovery Manager, 3331
- Wayne Lehman, County Natural Resources Specialist, 3333
- Brittany Moore, Agricultural Program Coordinator, 3325
- Ryan Michlovsky, Conservation Program Coordinator, 3330
- Lorie Reichert, Conservation Program Asst., 3316
- Drew Kline, Parks & Rec. Supervisor, 3334
- Alexa Kramer, Natural Resources Conservationist, 3336
- Kyle Schutt, Insect Management Technician, Cell: 484.331.4499

*See you at the
Schuylkill County Fair,
Rt.895, Summit Station*



**Summer 2019
Page 15**